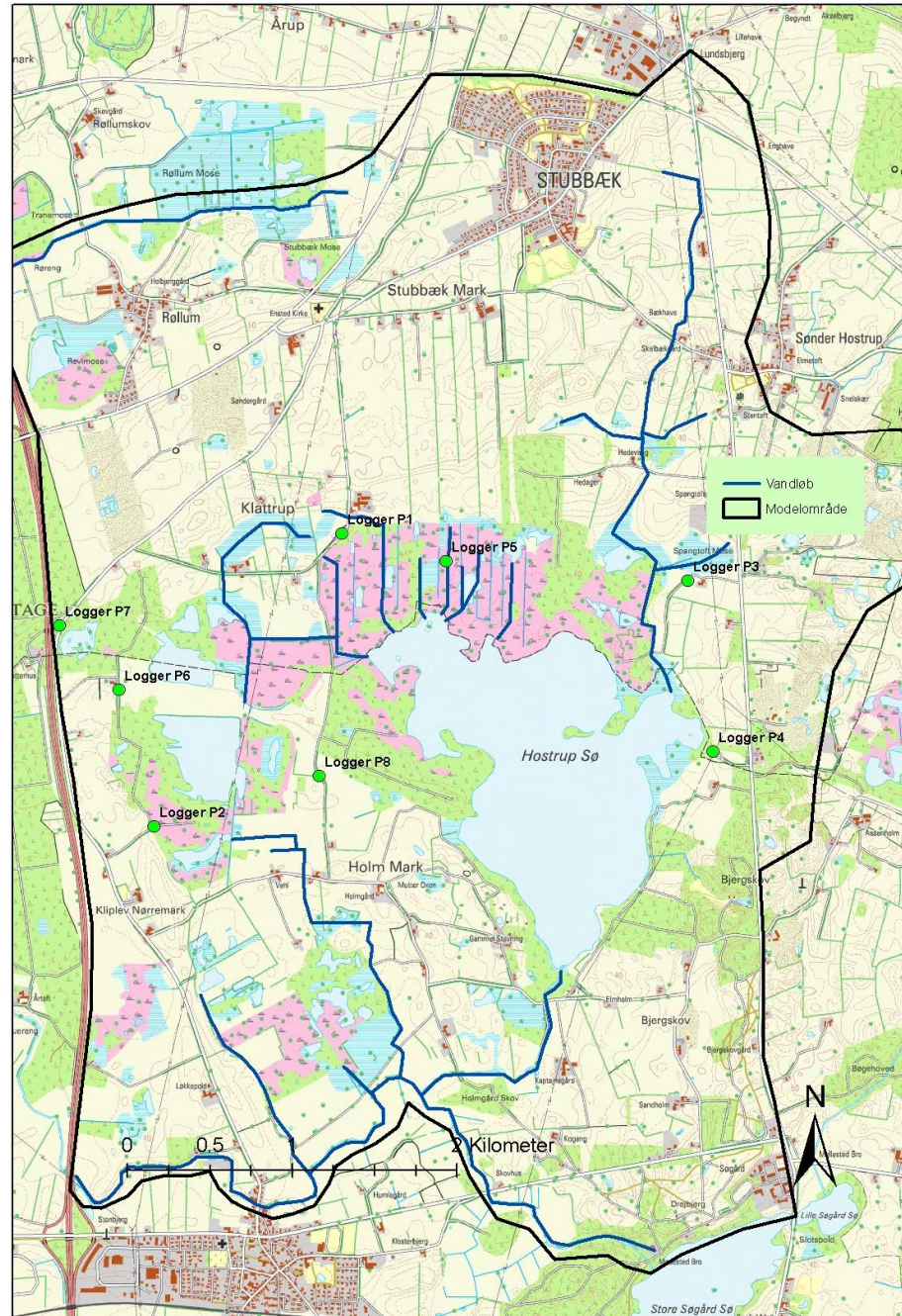


Hostrup sø

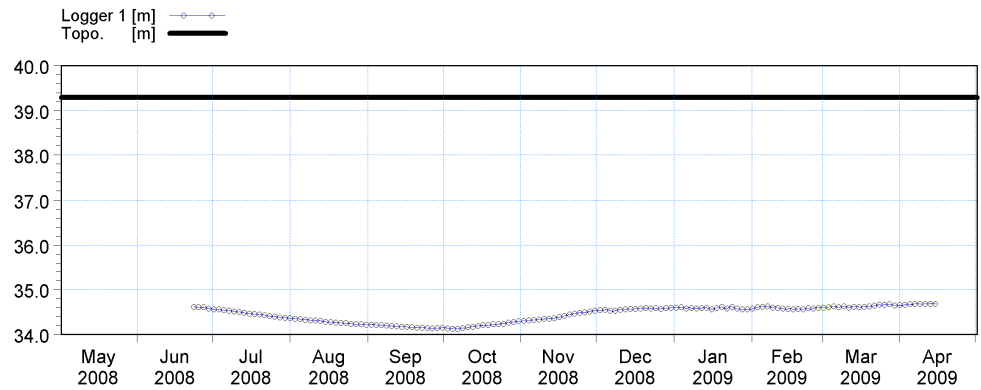
BILAG 1

Observationsdata

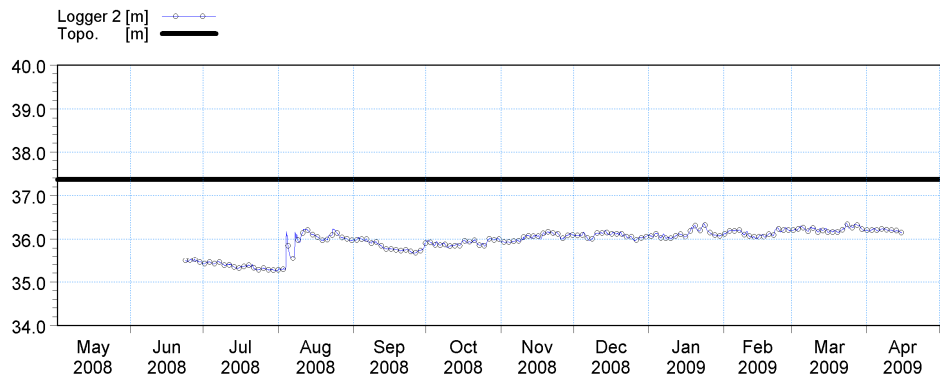
Alle observationsdata er vist i kotesystem DVR90.



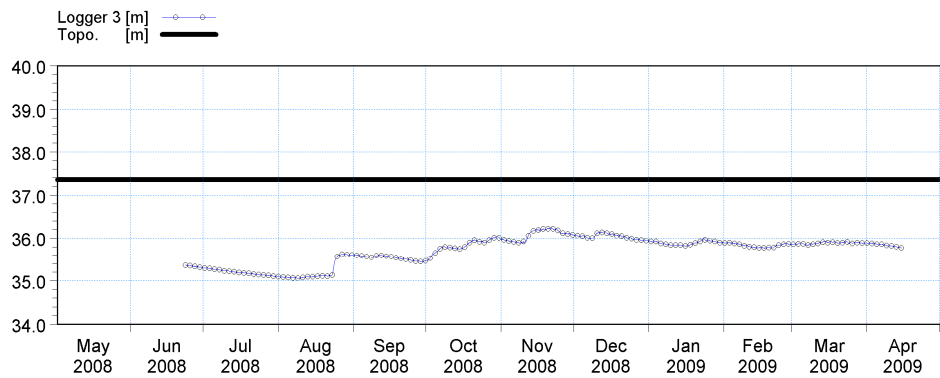
**Figur 1 Grundvandsstationer**



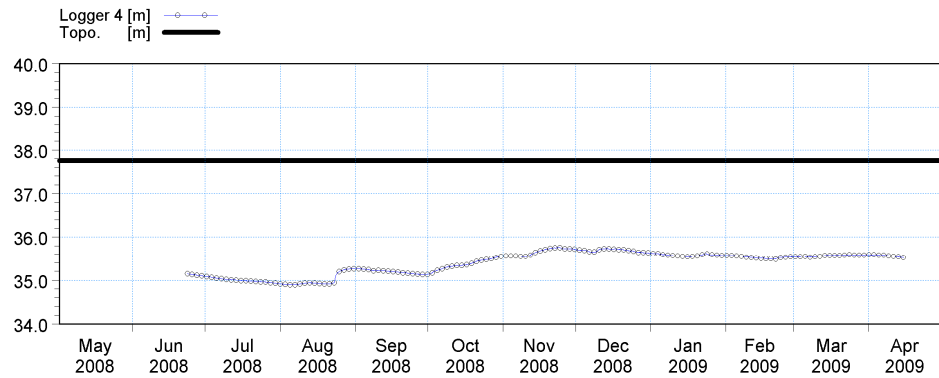
**Figur 2 Logger 1. Observationsværdier (prikker) og terræn (sort streg).**



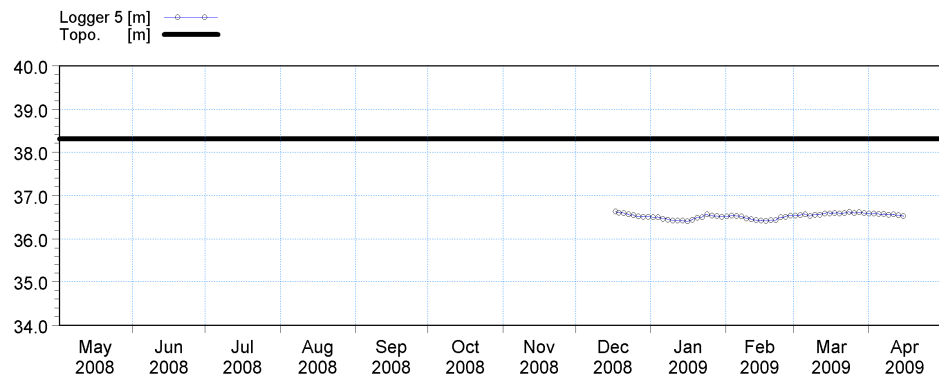
**Figur 3 Logger 2. Observationsværdier (prikker) og terræn (sort streg).**



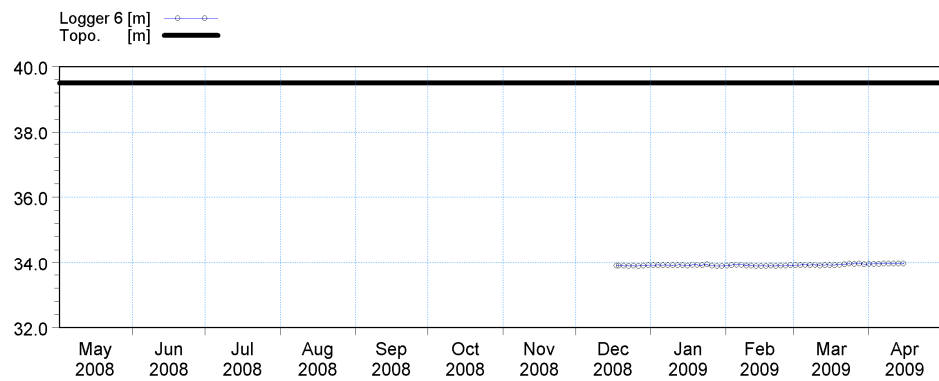
**Figur 4 Logger 3. Observationsværdier (prikker) og terræn (sort streg).**



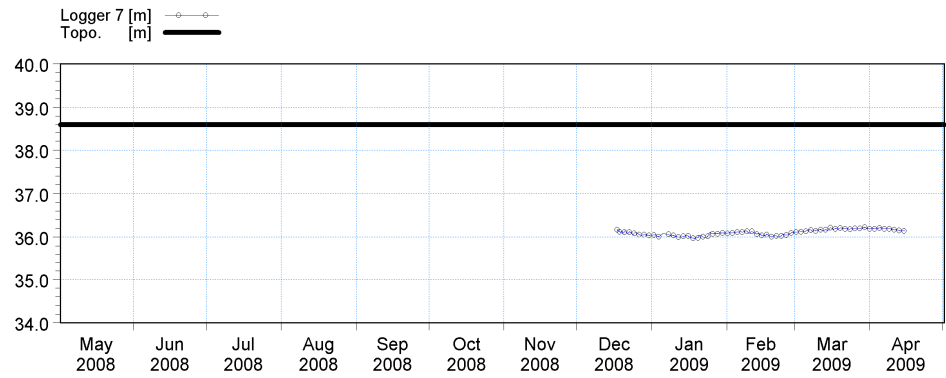
**Figur 5 Logger 4. Observationsværdier (prikker) og terræn (sort streg).**



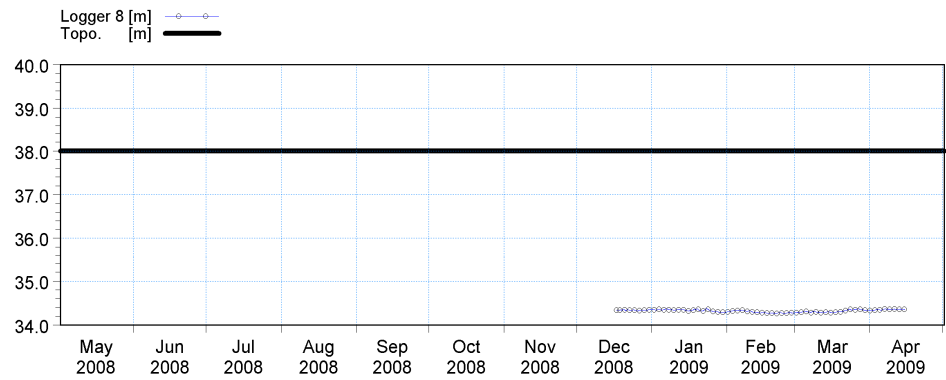
**Figur 6 Logger 5. Observationsværdier (prikker) og terræn (sort streg).**



**Figur 7 Logger 6. Observationsværdier (prikker) og terræn (sort streg).**



**Figur 8 Logger 7. Observationsværdier (prikker) og terræn (sort streg).**

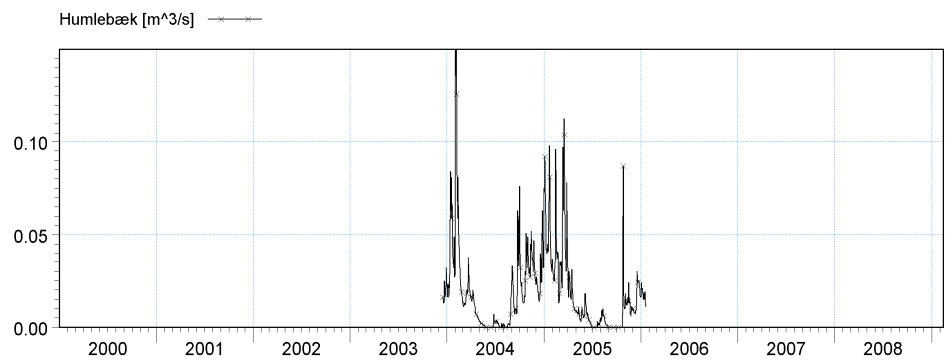


**Figur 9 Logger 8. Observationsværdier (prikker) og terræn (sort streg).**

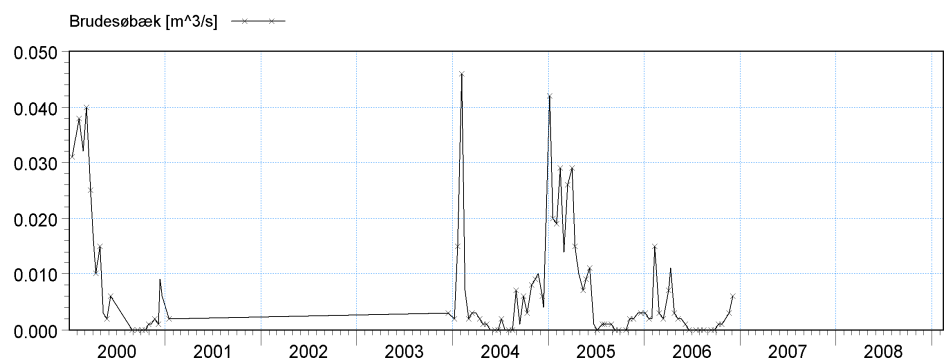
### Vandløbsstationer



**Figur 10 Observeret vandstand i Hostrup sø (målt i Hostrup å)**



**Figur 11 Observeret afstrømning fra Humlebæk**



**Figur 12 Observeret afstrømning fra Brudesøbæk**