

Marked nature trails

The nature trails are marked by coloured arrows on red wooden posts.

Lodbjerg dune plantation

Trail no. 1 Red 2 km. Start at the car park on Lodbjergvej. Initially, the trail affords a view over Ørum Lake, after which it cuts through varied vegetation and passes an artificial lake constructed around 1975.

Trail no. 2 Yellow 5 km. Starting from the same departure point as Trail no. 1 and following no. 1 for the first kilometre the trail then diverts to Baunsande and Baunhøje, both with lovely views. A little further on, it passes Lodbjerg church, one of the smallest in Denmark.

Trail no. 3 Blue 1,4 km. Start at the car park next to Lodbjerg church and proceed north through Kirkesande to two large bronze age mounds at Baunhøje. The trail takes the same route back.

Trail no. 4 Red 1 km. Start at the second car park on Fyrvej. The trail leads over undulating ground planted with European black pine and mountain pine to a viewpoint overlooking sandy heath land towards the north.

Trail no. 5 Blue 5 km. Start from the same departure point as Trail no. 4, and follow no. 4 as far as Lodbjerg lighthouse. From here, the trail leads northwards over the sandy heath to the Penbjerg viewpoint. One option - when the weather permits - is to descend over the dunes, and return along the beach in the direction of the lighthouse. The marked trail continues east and takes you back via Redningsvejen. Note the two groups of burial mounds.

Hvidbjerg dune plantation

Trail no. 6 Blue 2 km. Start at the Kystvejen car park from the 9.2 km sign. The trail encompasses lovely, varied forest with plenty of deciduous trees.

Trail no. 7 Red Suitable for the disabled 2,5 km. Start at the same departure point as Trail no. 6, cross Kystvejen and follow well-surfaced forest roads, with a short section on the Lyngbyvej. You will pass diverse forest interspersed with small fields.

Trail no. 8 Yellow 4,5 km. This trail starts at the car park on the north side of Lyngbyvej and follows good forest roads through lush woods in the east to slightly more uniform conifer plantation in the west, passing the old nursery which is now a camping area.

Trail no. 9 Red 5 km. Starting from the same departure point as Trail no. 8, the trail alternates between plantation and wide open expanses. Enjoy the outlook over Holme lake and, further west at Store Tyvbak, a sign indicates a path leading to another panorama. You will also pass the Københavnerskov (Copenhageners' wood) and the memorial stone for C.C. Andresen.

Trail no. 10 Yellow 6 km (can be extended to 8.5 km). Start at the Kystvejen car park from the 10.8 km sign. The trail leads to Per Madsens Kjør (bathing pond) and further west to the heath near Nakorsakso. The viewing tower affords great opportunities for sighting roe deer and red deer. Shortly after the tower, there is a group of burial mounds. You can take a slightly longer version of the walk westwards to the large heath near Røddekjør.

Welcome to the dune plantations of Sydthy

The sweeping dunes and sandy heaths of Sydthy constitute one of the most grandiose and undisturbed landscapes in Denmark.

Nature trails: There are 10 marked trails in the plantations. The map in this leaflet can also be used as a guide for other walks. Please bear in mind however that the section of Lyngby Hede east of Redningsvejen is closed during the birds' breeding season from 1 April to 15 July.

Cycling trails: The many forest tracks here are suitable for touring and cyclists will find the map in this leaflet a useful guide. We recommend bringing a picnic and binoculars.

Horse riding: There is a 4 km bridle path just north of Svankær. Leave cars and trailers at the Lyngbyvej/Store Brandlinie car park.

The West Coast Route: The West Coast Route between Agger and Bulbjerg is a walking and cycling trail, approximately 80 km long. Long stretches of the trail follow the old lifeboat Rescue Route, and there are suitably spaced simple camping areas, including the old rescue station in Lyngby.

Spending the night: A simple camping area can be found at the old nursery in Hvidbjerg plantation. Walkers and cyclists may camp here for up to two nights and make use of the designated bonfire site and firewood provided. There are toilets at the site and water can be collected from nearby "Hvidbjerghus". Larger, organised groups may also use the camping ground by arrangement with the Forest and Nature Agency for Thy.

Facilities for the disabled: One of the marked trails in Hvidbjerg plantation, no. 7, has been designed with the needs of wheelchair users in mind. Additionally, many of the forest tracks are good enough for wheelchair use at most times of the year.

Nature tours: The Forest and Nature Agency, Regional Office, Thy, organises nature tours either as a booking or in the form of open events which are advertised at www.skovognatur.dk/thy.

Further information: The Sydthy dune plantations are run by the Danish Forest and Nature Agency which can be contacted locally through The Regional Office, Thy, tel +45 97 97 70 88 or + 45 97 94 80 25, or by e-mail: thy@sns.dk. For more information see www.skovognatur.dk.

The dune plantations of Sydthy



The "Nature Trails" series of leaflets covers selected nature areas. They are available at libraries, tourist information offices and at the entrances to many of the areas. See also www.skovognatur.dk

Danish Ministry of the Environment
The Forest and Nature Agency

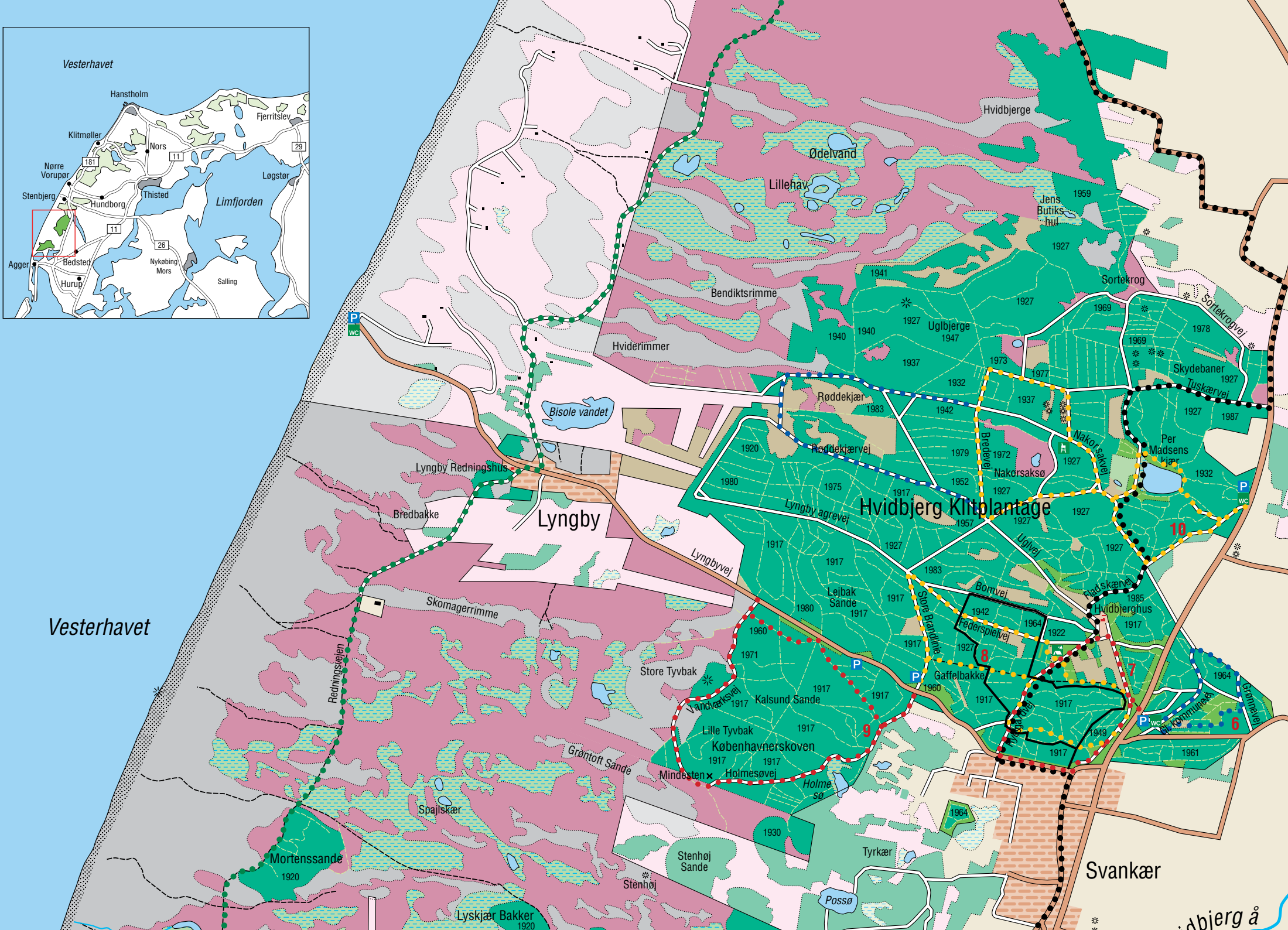
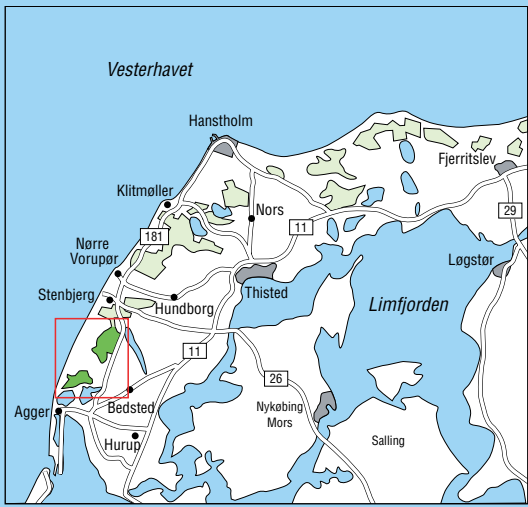
- administration of state-owned forests and other nature areas in Denmark
- management with a view to recreation, timber production and the protection of natural and cultural assets

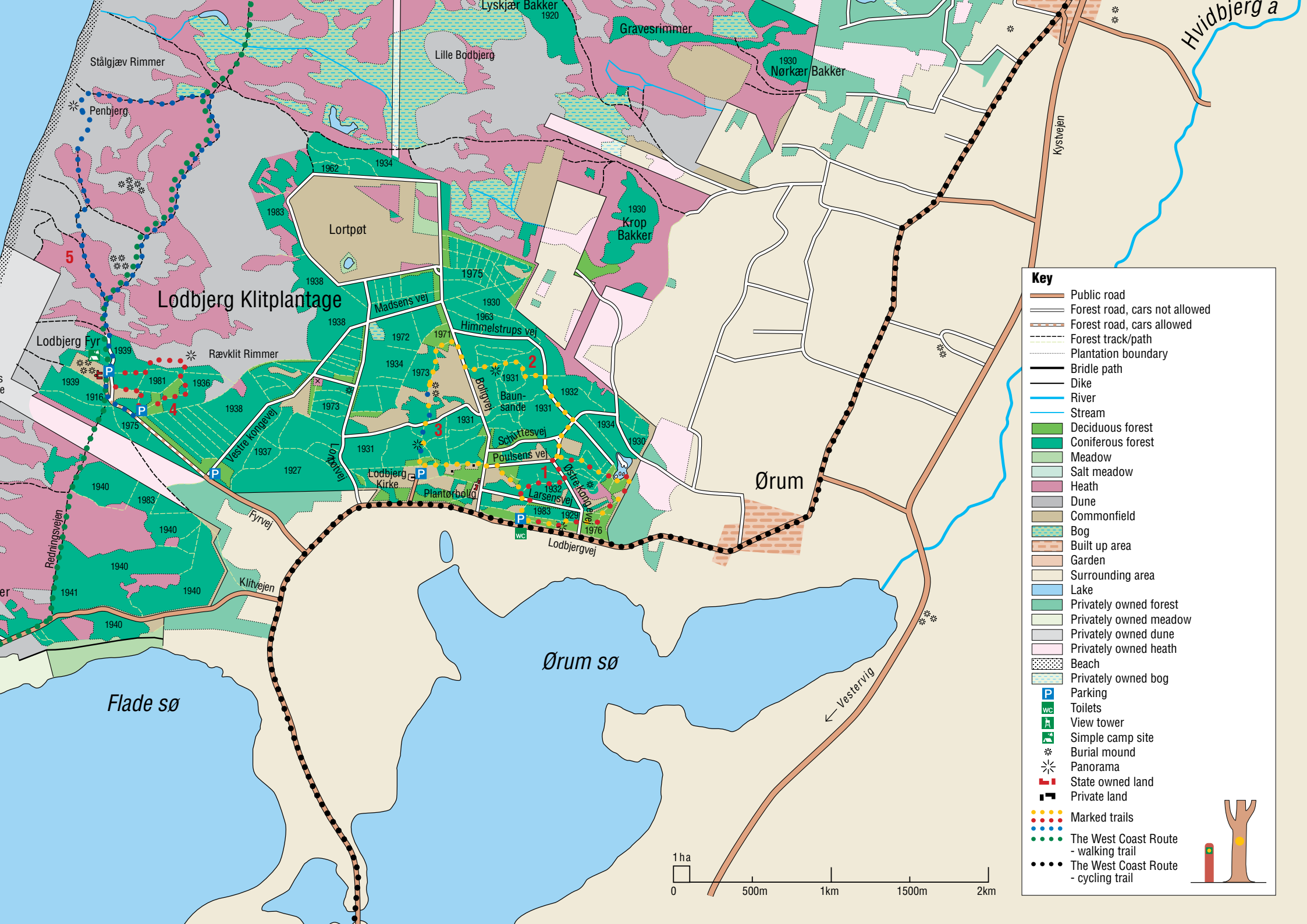
**The Forest and Nature Agency manages
190,000 ha of forest and other nature areas**

The dune plantations of Sydthy



**Danish Ministry
of the Environment**
The Forest and Nature Agency
Nature trails series no. 42E

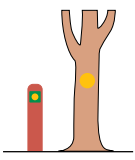
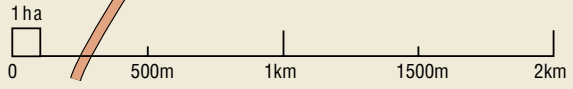


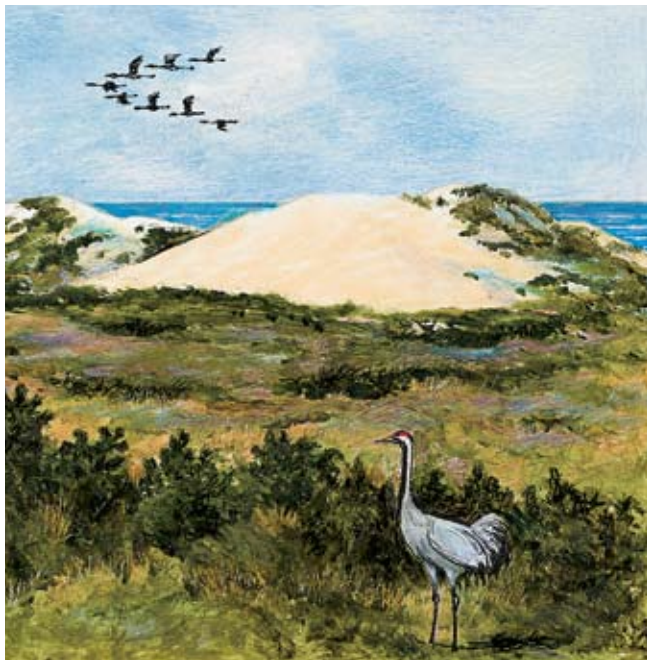


Lodbjerg Klitplantage

Key

- Public road
- Forest road, cars not allowed
- Forest road, cars allowed
- Forest track/path
- Plantation boundary
- Bridle path
- Dike
- River
- Stream
- Deciduous forest
- Coniferous forest
- Meadow
- Salt meadow
- Heath
- Dune
- Commonfield
- Bog
- Built up area
- Garden
- Surrounding area
- Lake
- Privately owned forest
- Privately owned meadow
- Privately owned dune
- Privately owned heath
- Beach
- Privately owned bog
- Parking
- Toilets
- View tower
- Simple camp site
- Burial mound
- Panorama
- State owned land
- Private land
- Marked trails
- The West Coast Route - walking trail
- The West Coast Route - cycling trail





Drifting sands

"The fields in the parish of Hvidbjerg are much plagued by drifting sands" and "The sand has invaded the greater part of the parish". These were the findings of two ministers writing in 1555 and 1571. Drifting sand drove people from their homes and laid bare whole parishes: Only around the year 1800 were measures put in place to stop its encroachment. Planting marram grass was the main solution. Its long roots bind the sand whilst the grass itself catches and halts the drifts. Towards the end of the 1800s, major work on the dune plantations was aimed firstly at stopping the drifting sand and secondly at yielding firewood and lumber, providing work for the local people.

Hvidbjerg sand plantations

The south west section of Hvidbjerg plantations goes by the distinctive name "Copenhageners' wood". Around the year 1850, C.C. Andresen - at his own expense - made the district's first attempt at tree planting. Andresen was later to become a trade union leader and commissioner responsible for managing the sand drift hazard. A memorial stone marks the spot.

Laid down in 1892, Hvidbjerg dune plantation benefits from relatively good soil on its eastern side, as can be seen from the trees' growth. Here, the sand layer is not so thick as to prevent roots from penetrating it. The many small fields around the Hvidbjerghus represent a welcome change of habitat where grazing roe and red deer are a fairly common sight.

Lodbjerg dune plantation

The dune plantation is one of the youngest in Thy, planting having commenced as late as 1923. At that time, the feeling was that sand drift was under control, allowing large stretches of heath and dune to be left unplanted for aesthetic reasons. This lends the area diversity and a number of interesting vistas. The soil here changes from good moraine in the centre of the forest to former seabed towards its north and southwest edges.

Sandy heaths

In a European context, the sandy heaths along the west coast of Jutland are unusual. It is thus Denmark's particular duty to care for and protect them. One of the threats to the heaths is the invasion of surrounding plantations. In order to recreate heathland, small sections of forest are at times removed and there is regular weeding out of self-sown trees on the heaths. Other measures are mowing or selected burning of the vegetation.

Among breeding birds on Lyngby heath are the common crane and wood sandpiper. Roe deer and red deer are common sights: Their "larder" extends from forest to open land.

A European network of nature areas

Stenbjerg, Lyngby and Lodbjerg heaths are EU protected sites and belong to a European network of habitats known as Natura 2000.

Natura 2000 sites are of two types: habitats in which various animal and plant species are protected and conservation areas whose aim is to protect certain birds. Depending on the designation, guidelines are set for achieving the conservation of the specific natural environment.

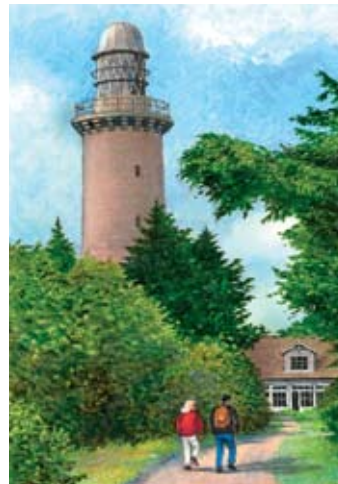
Traces of the past

The many burial mounds in Sydthy testify to a densely populated area in bronze age times. There are 17 registered burial mounds on Hvidbjerg Plantation. Sand drifts have however accumulated, with the result that barrows can often be difficult to make out. The mounds are particularly evident in the northern part of the plantation. Trail no. 10 passes an excellent example of a group of mounds.

Lodbjerg heath north of the lighthouse has two well-preserved groups, totalling nine mounds in all. The National Museum has excavated some mounds, and analyses of pollen show that in stone age times the woods here contained such species as lime, oak, and hornbeam. Heather appears increasingly in later samples. This tells us that the first farmers cleared forest for cultivation; after a short period of agricultural activity, heather regained the upper hand.

Lodbjerg lighthouse

Now a listed monument, Lodbjerg lighthouse was built in 1883 using granite from Bohus in Sweden. For a small entrance fee you can climb the lighthouse to gain a new perspective on a landscape dominated by sea, sand dunes, heath, small lakes and forestry. To the south, there is Agger Tange and its long series of breakwaters constructed between 1900 and 1920 to protect this spit of land from the battering of the sea. East of Ørum Lake, Vestervig church towers above fertile agricultural land.



Lodbjerg coastal dunes

If you follow the path from Lodbjerg lighthouse towards the sea, you will come across a distinctive formation known locally as the "black nose". Part of the cliff, it rises to a height of 10 metres and consists of moraine soil overlaid with sand drifts. Between the clay and sand are layers of peat or "sea peat", the result of earlier bogs which are now buried. At the bottom of the cliff there is a raised pile of dark micaceous clay, a marine deposit which contains the fossils of numerous small snails, mussels and sea urchins. The coast is still eroding, and at times ancient artefacts can appear which, like the burial mounds just beyond the littoral dunes, bear witness to the stone and bronze age people who once inhabited the area.

Over the years the coast here has suffered dramatic onslaughts and has in certain places moved between one and two kilometres further inland.

Lodbjerg church

Lodbjerg church dates back to the 1400s and is one of the smallest in the country. A church inspection in 1723 noted that the churchyard was so beset by drifting sand that the church windows were obscured and the gravestones hidden. Later still, the sand was blown away, and the church was demolished.

With good visibility, Lodbjerg's counterpart - the old abbey church in Vestervig, also known as Denmark's largest village church, can be seen to the south east.

Per Madsen's lake

Per Madsen's lake in Hvidbjerg plantation is popular for outings and bathing. The clean water harbours species such as water lobelias and quillworts. In earlier times, the lake was prone to drying out in summer, but in 1930 the building of a road west of the lake created a kind of dam which for much of the time enables the lake to retain its water.

