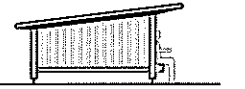
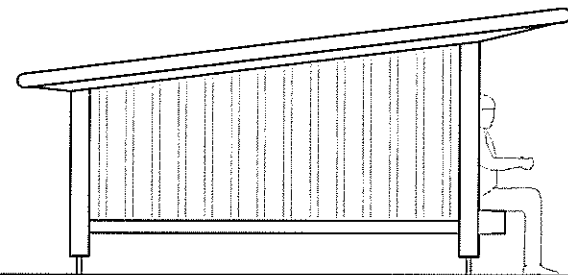


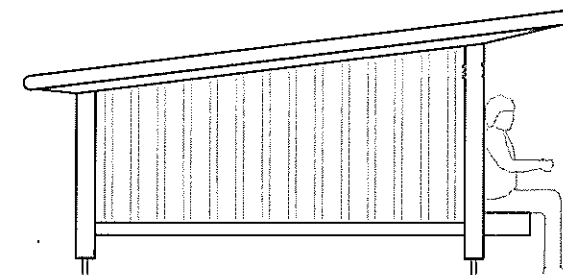
Naturstyrelsen  
små huse i skoven

type 7.2 shelter  
vers. 2011

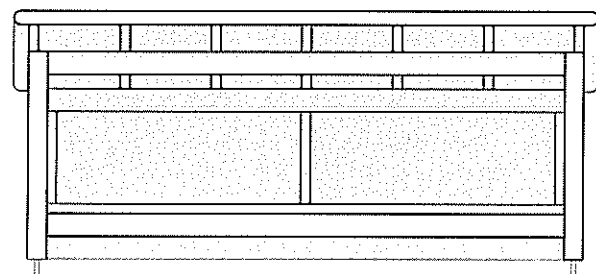




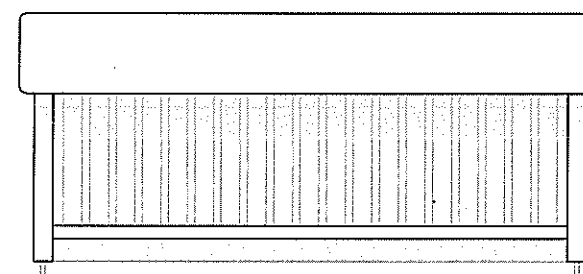
opstalt side



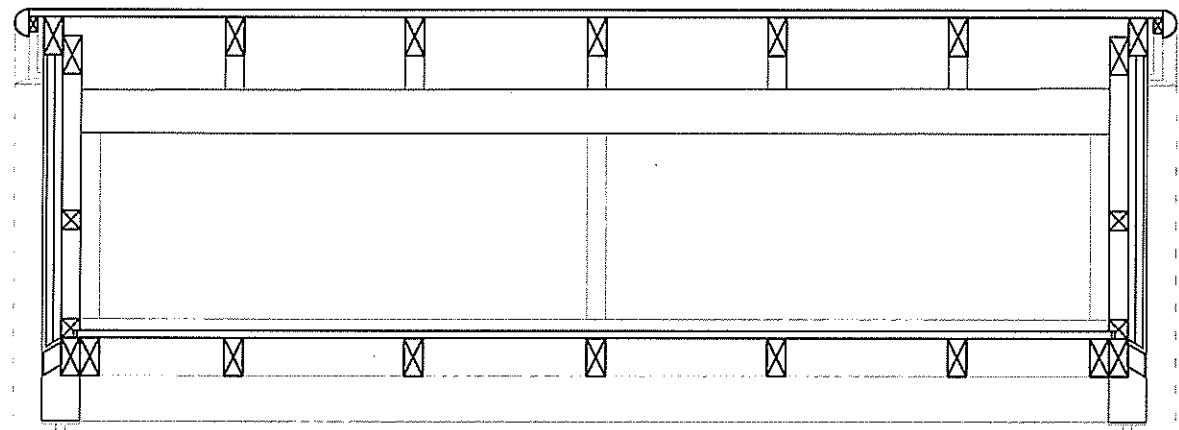
opstalt side - alternativ med større fremspring på gulv



opstalt front

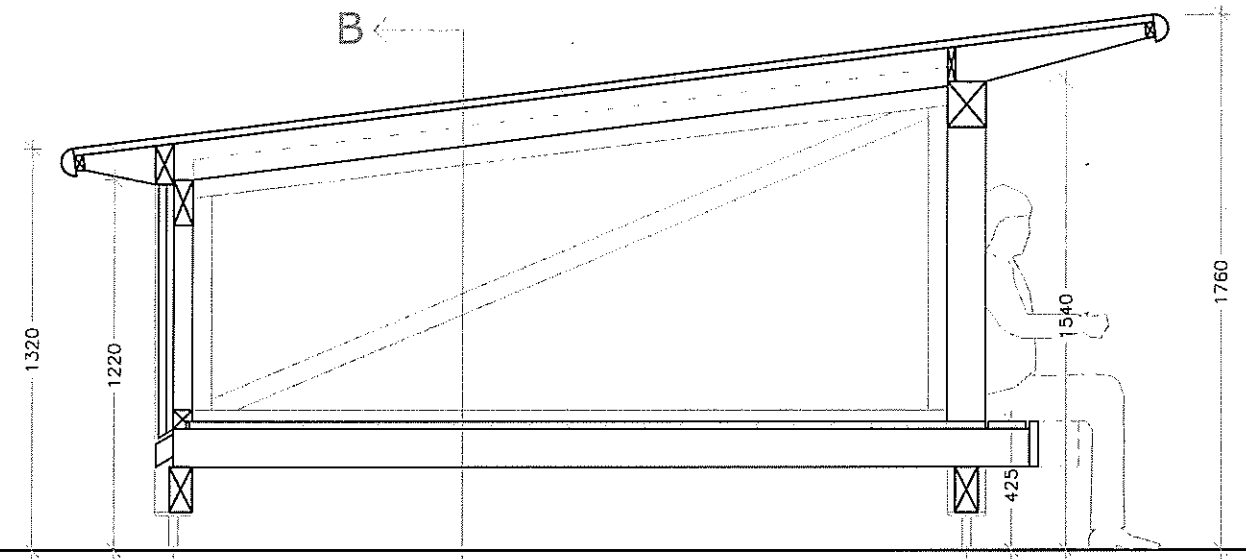


opstalt bag



cc 3540

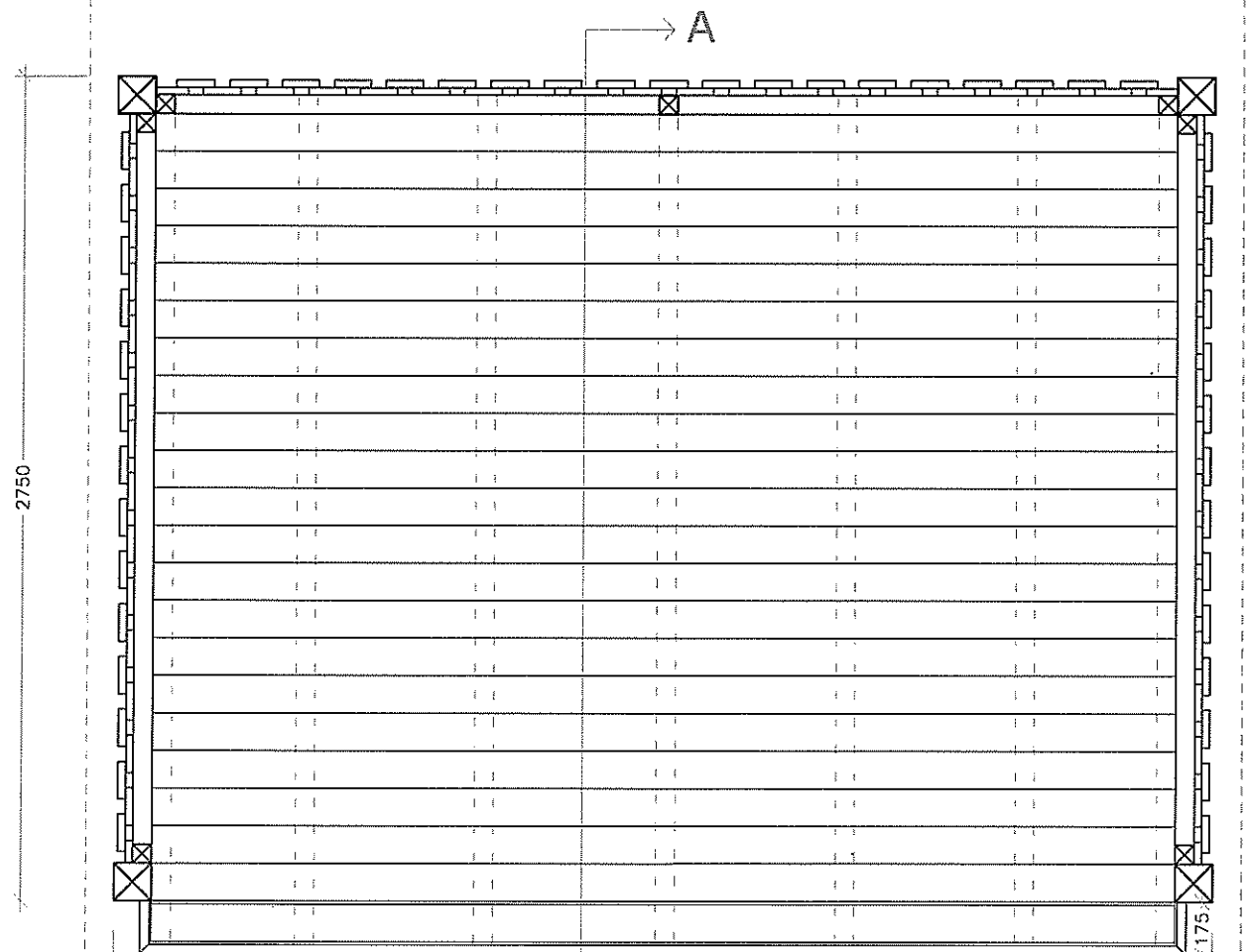
snit B-B



B ←

cc 2600

snit A-A



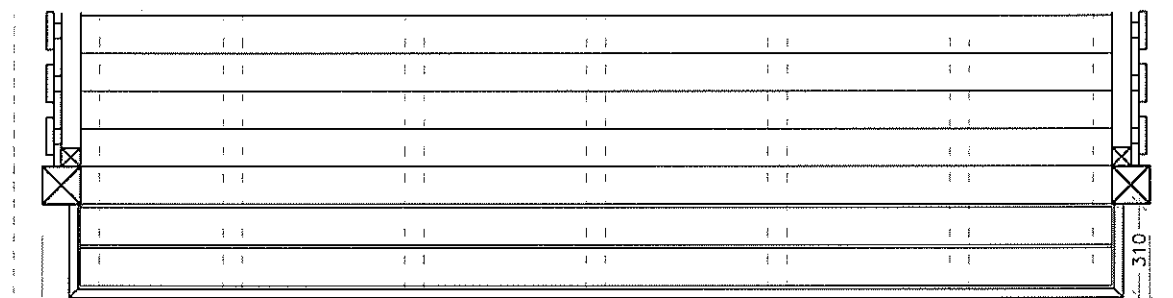
2750

175

3665

plan gulv

tagudhæng



475 600 600 600 600 475

plan gulv

alternativ med større fremspring på gulv

3665

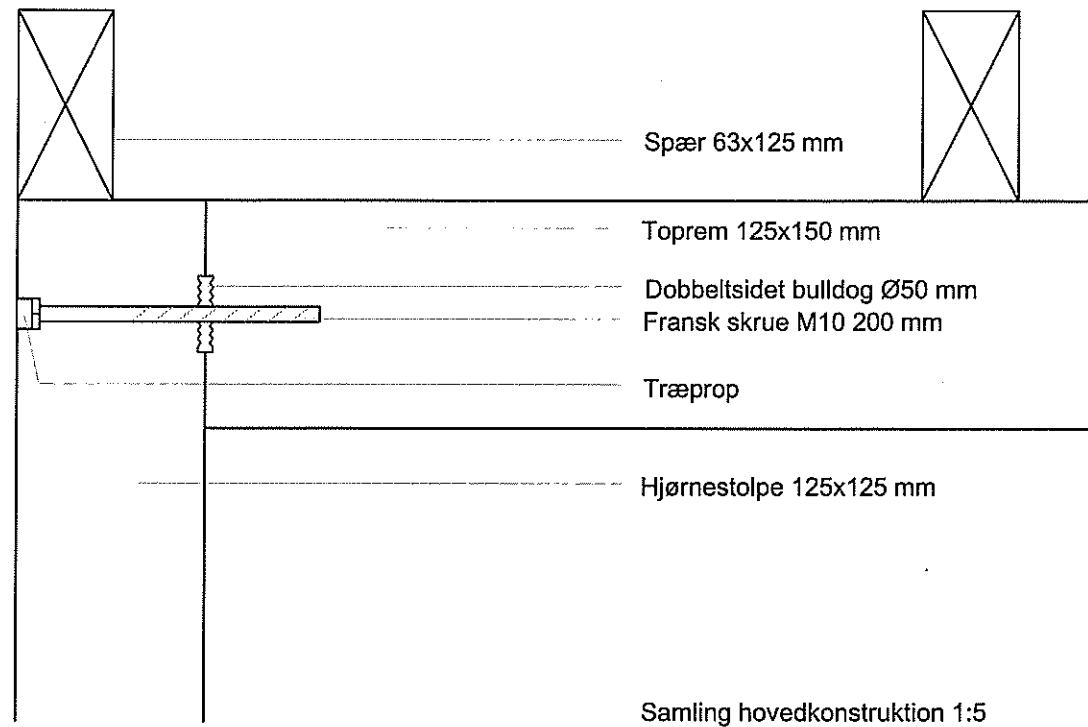
600 600 600 600 600 600

plan spær

(gælder for begge typer)

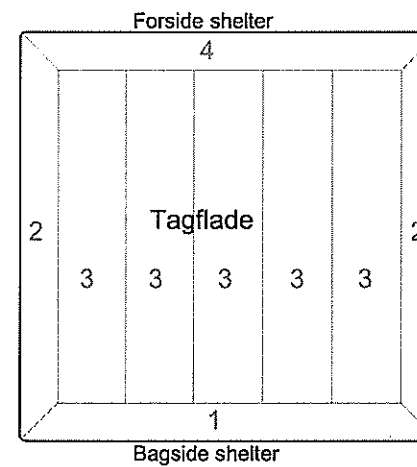
Naturstyrelsen  
små huse i skoven

7.2.02 shelter - plan og snit  
mål 1:25 2011

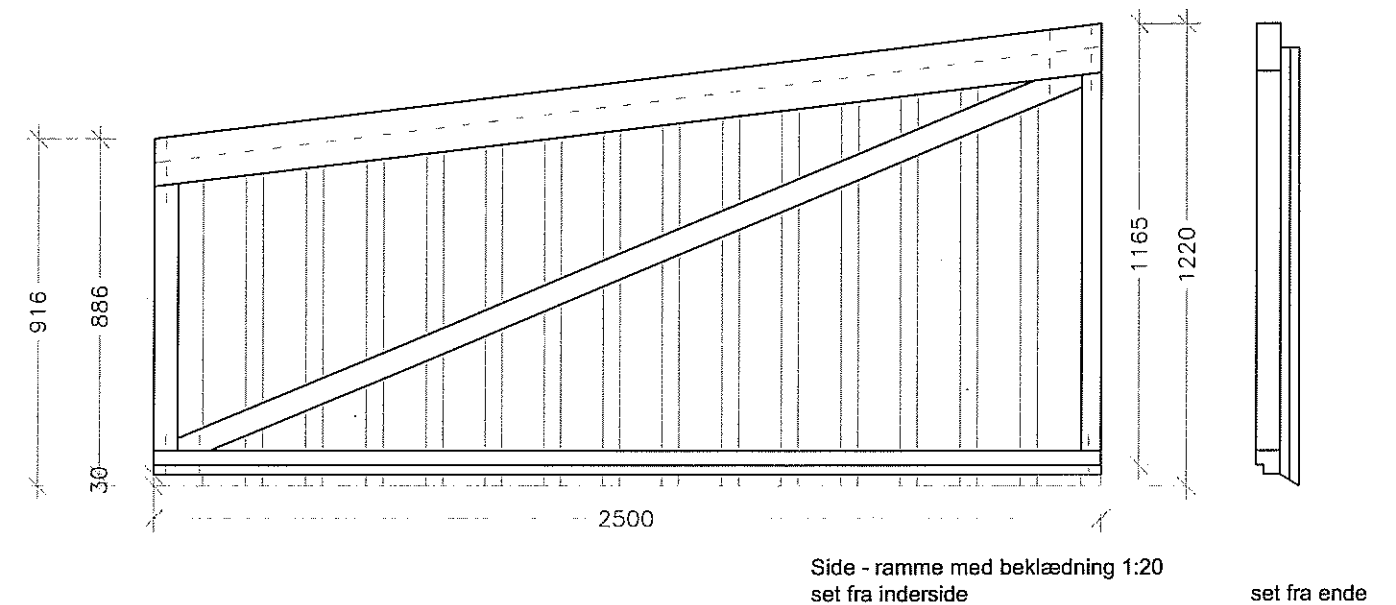
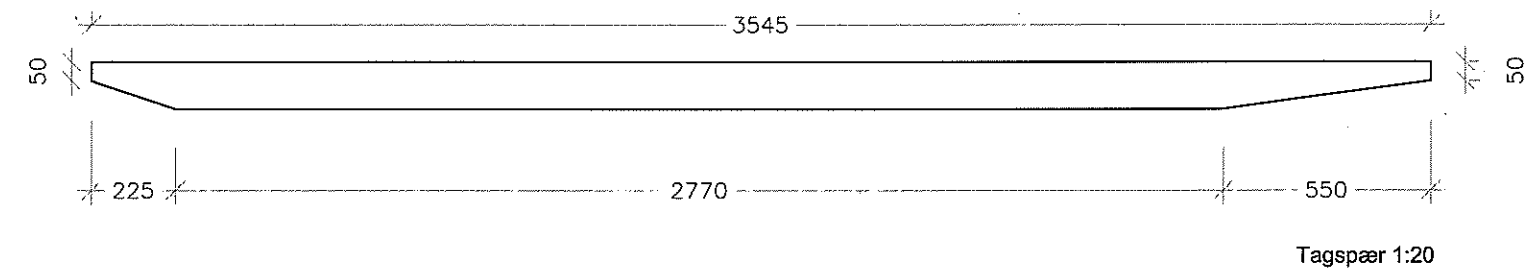
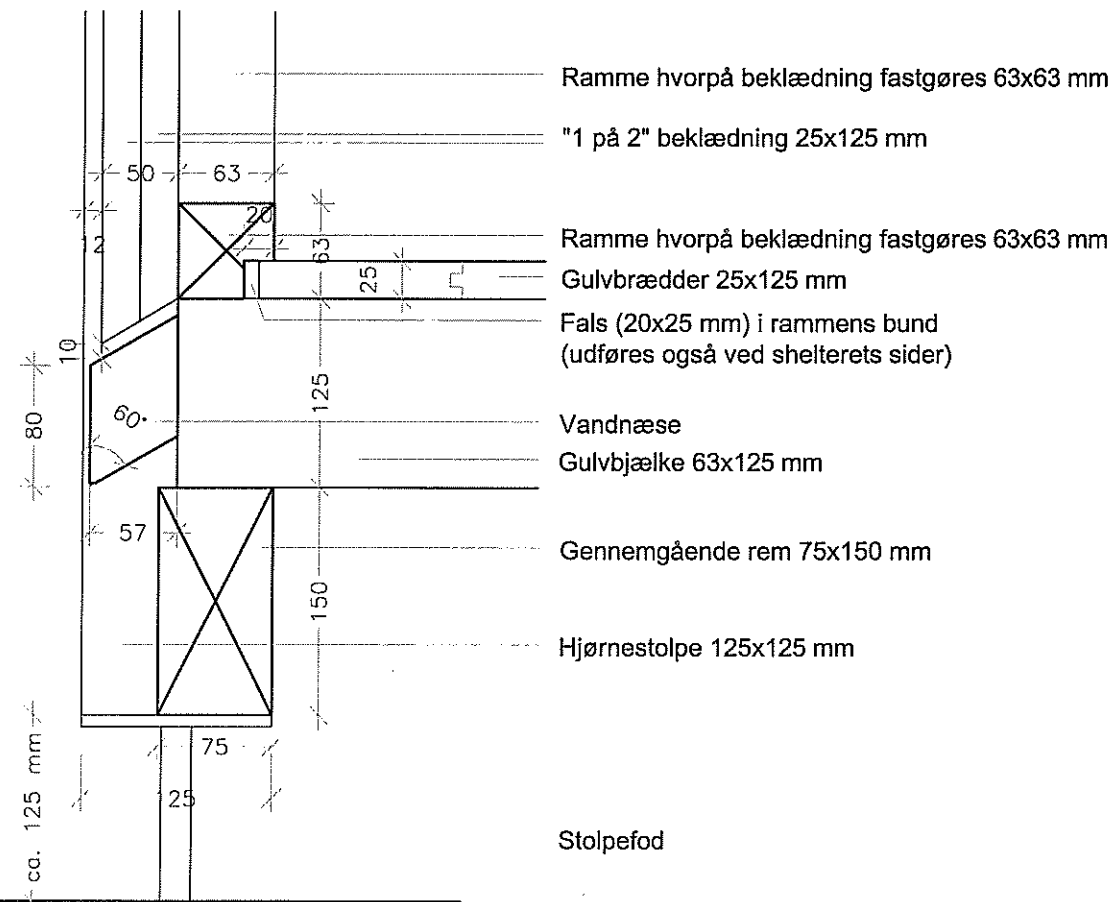
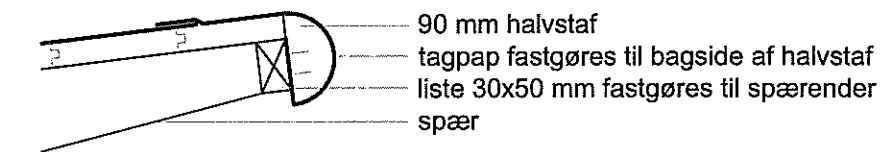


Tagkonstruktion: Taghældning 7 grader. Et lag Icopal Top 400P sort (bredde 600mm). Et lag Icopal base 411P langs brædder. 25x125 mm rupløjede brædder. 7 stk. spær 63x125 mm cc 600 mm. Tagkant som Icopalanvisning 9.10.11 med halvstafliste 90 mm.

Princip for rækkefølge ved montering af tagpap:



Eksempel forreste tagkant



Lodret snit i bagvæg 1:5

Naturstyrelsen  
små huse i skoven

7.2.03 shelter - detaljer  
mål 1:5/1:20 2011